

## **BRIDGING SESSION**

**Money matters: Financing the global epidemic**

**Sectoral Impact: what we know, don't know  
and need to know: the true cost of AIDS**

**by**

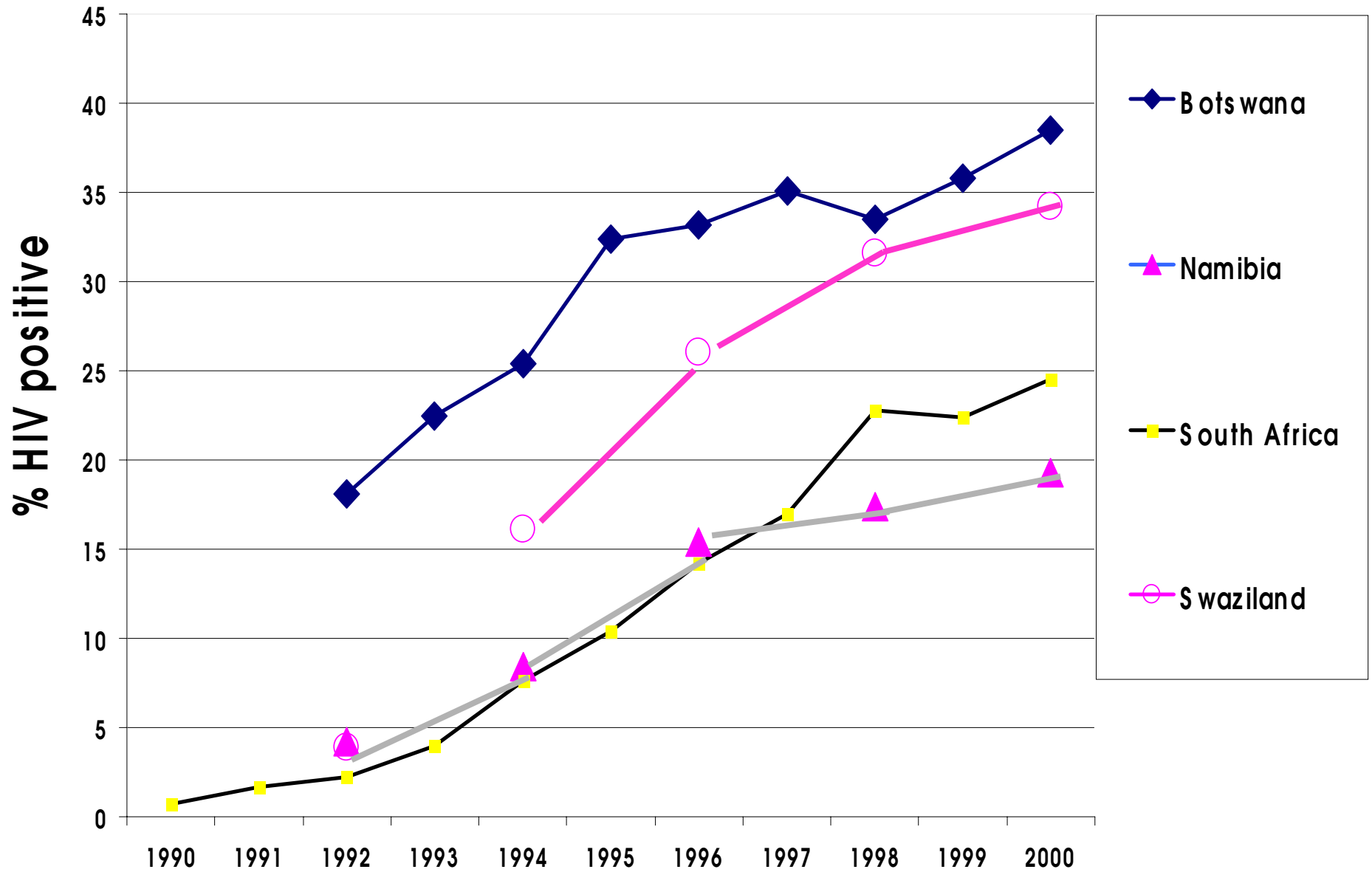
**Professor Alan Whiteside,  
Director Health Economics and HIV/AIDS Research  
Division, University of Natal, Durban**

**[www.und.ac.za/und/heard](http://www.und.ac.za/und/heard)**

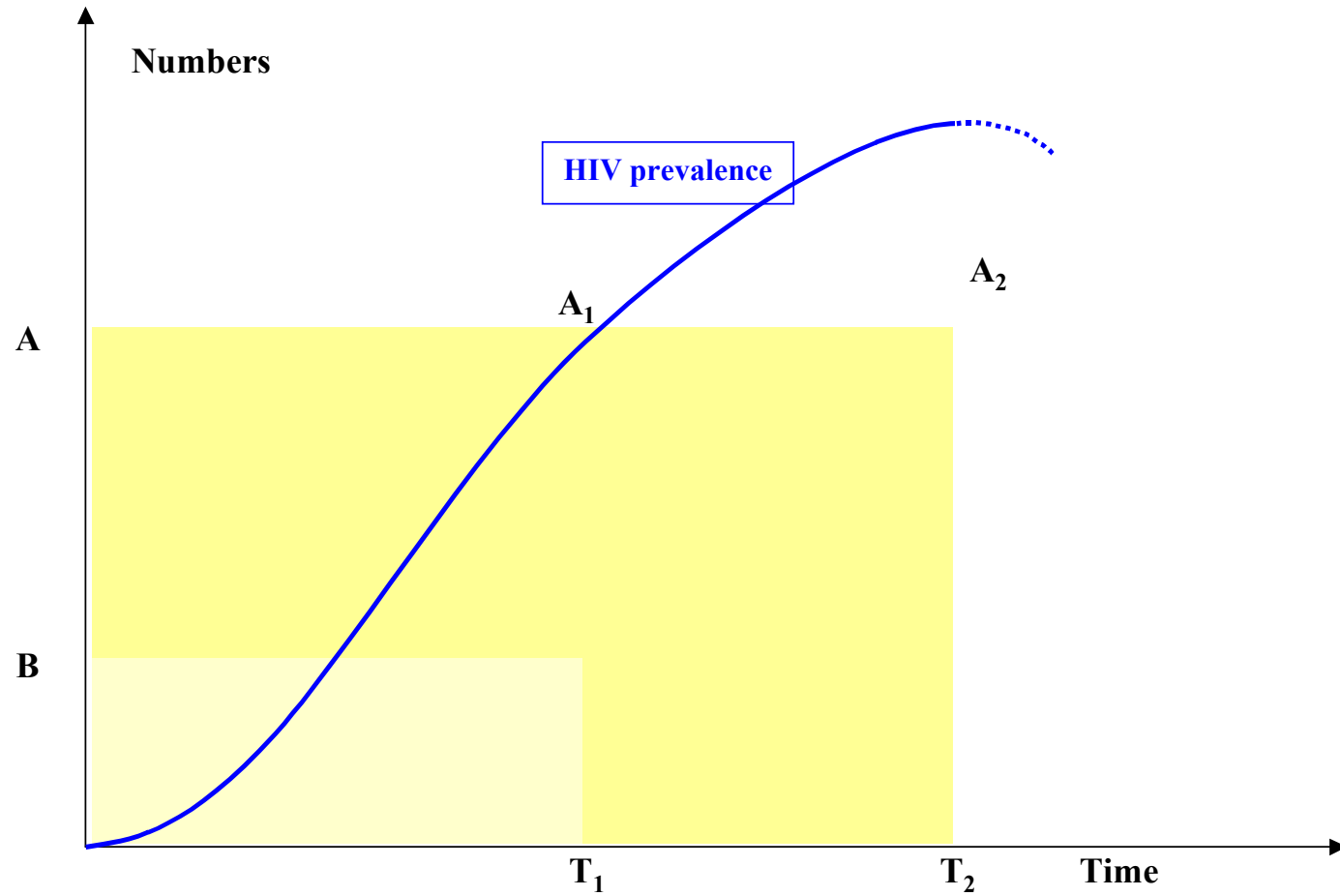
# Outline of Presentation

- What we know and don't know
  - Macro-economic studies
  - Household
  - Firms and sectors
- What we need to know
  - The dynamics of HIV and AIDS
  - The problem of burden shifting
  - The tools and their use
  - The complexity
- Conclusion

# National trends in HIV prevalence

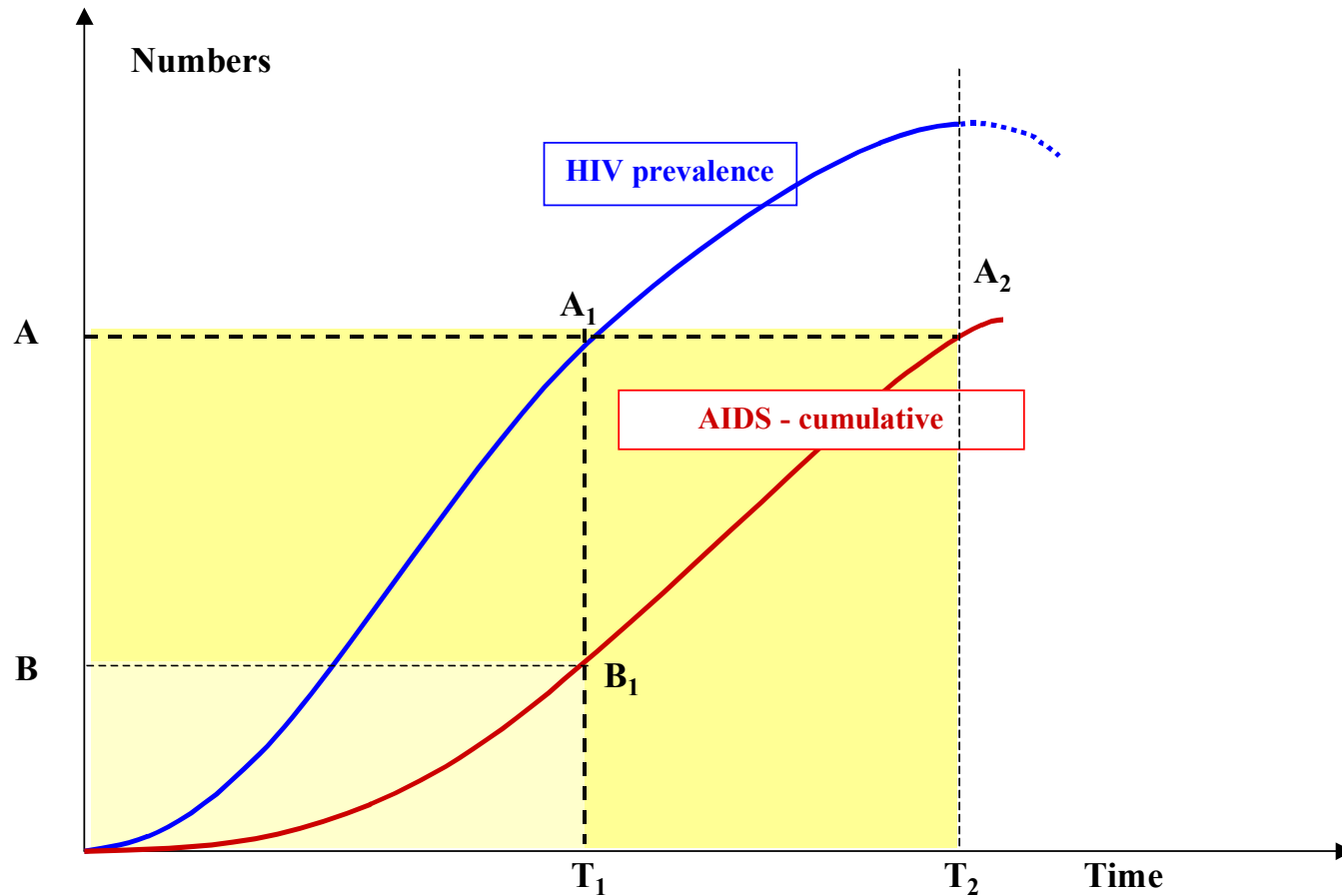


# Epidemic Curve, HIV

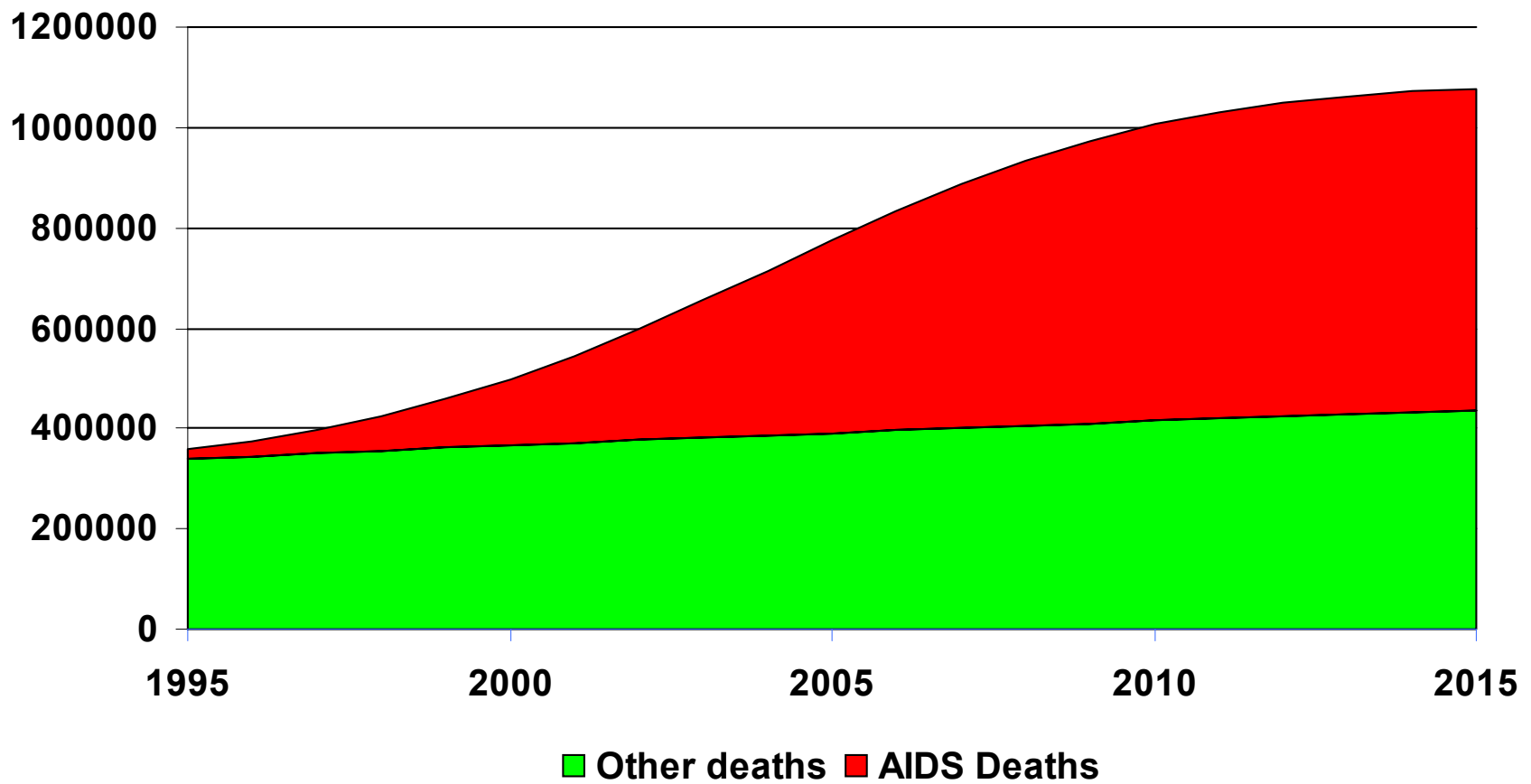


27Aug01 -Report I: *Epidem'gy & Lit.* p. 27

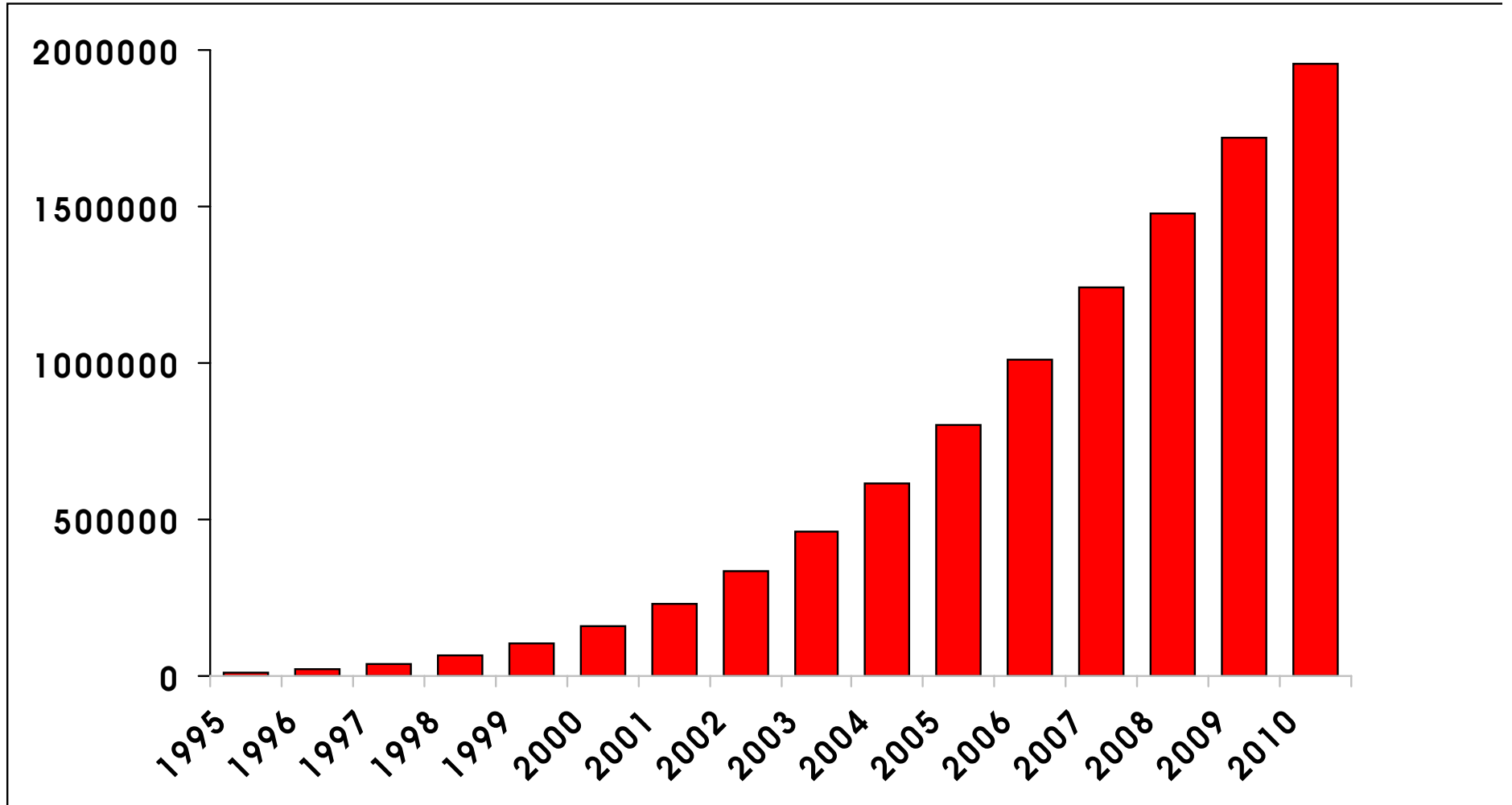
# Epidemic Curves, HIV and AIDS



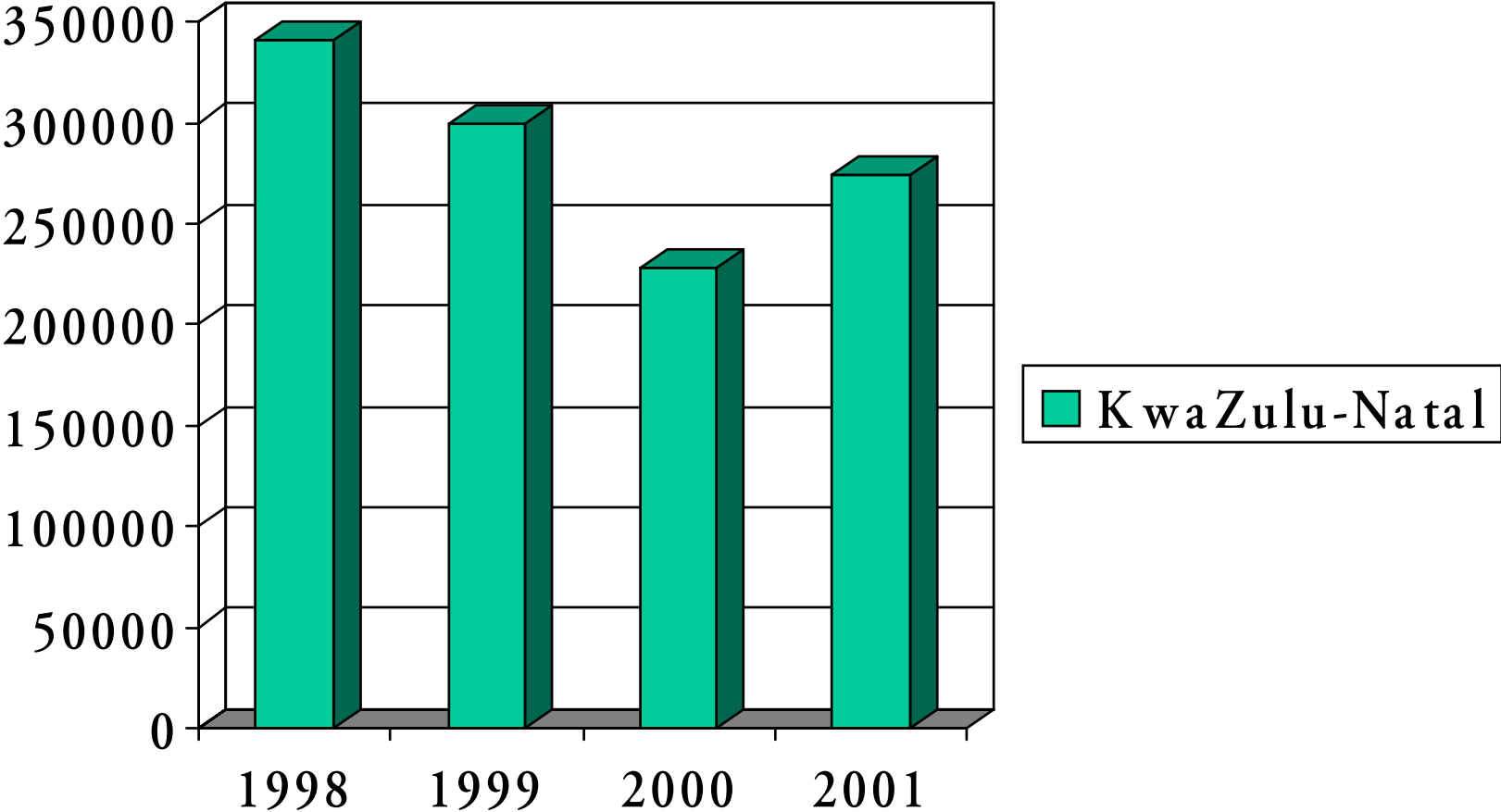
# AIDS and non-AIDS Deaths



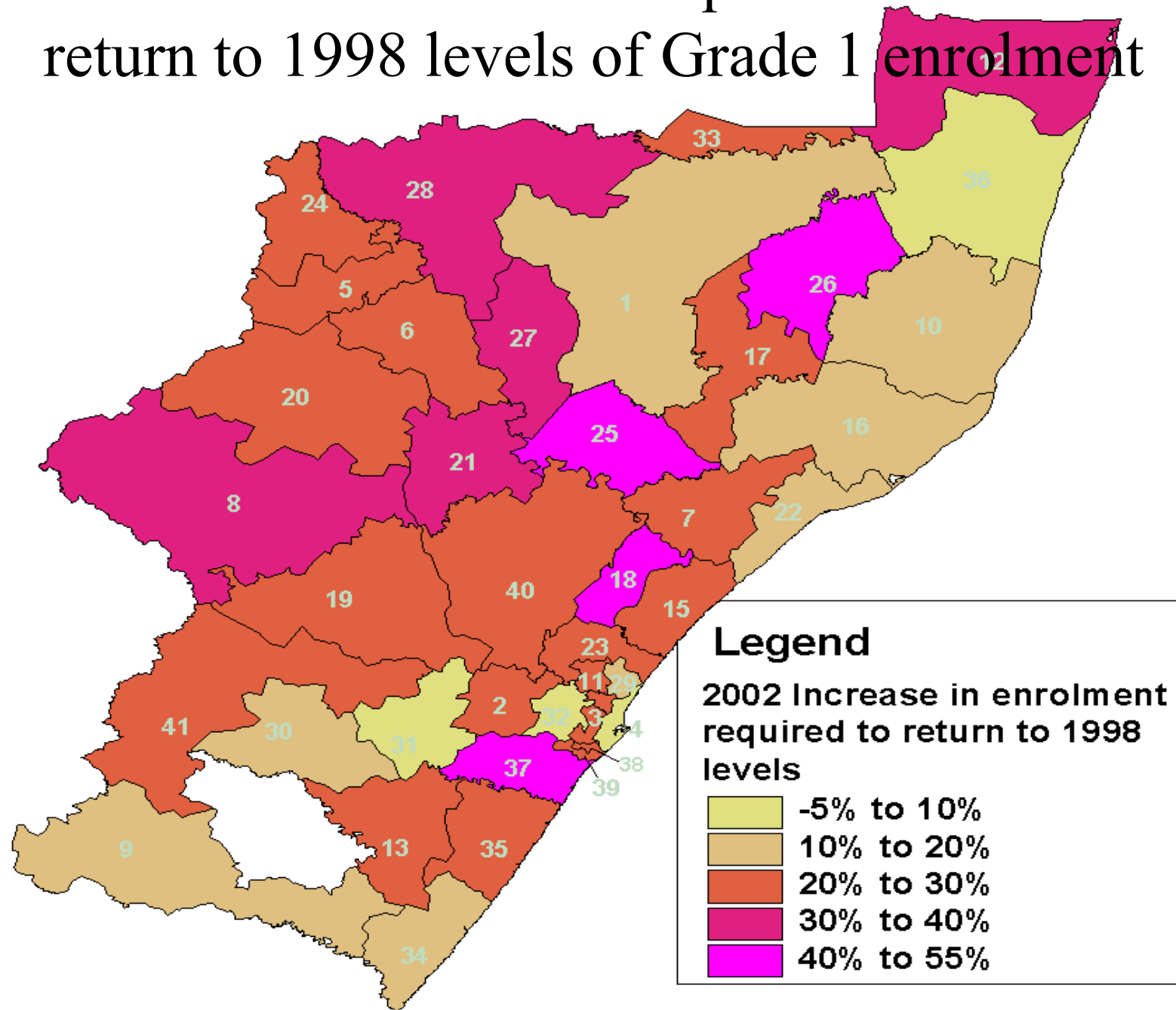
# AIDS orphans in South Africa



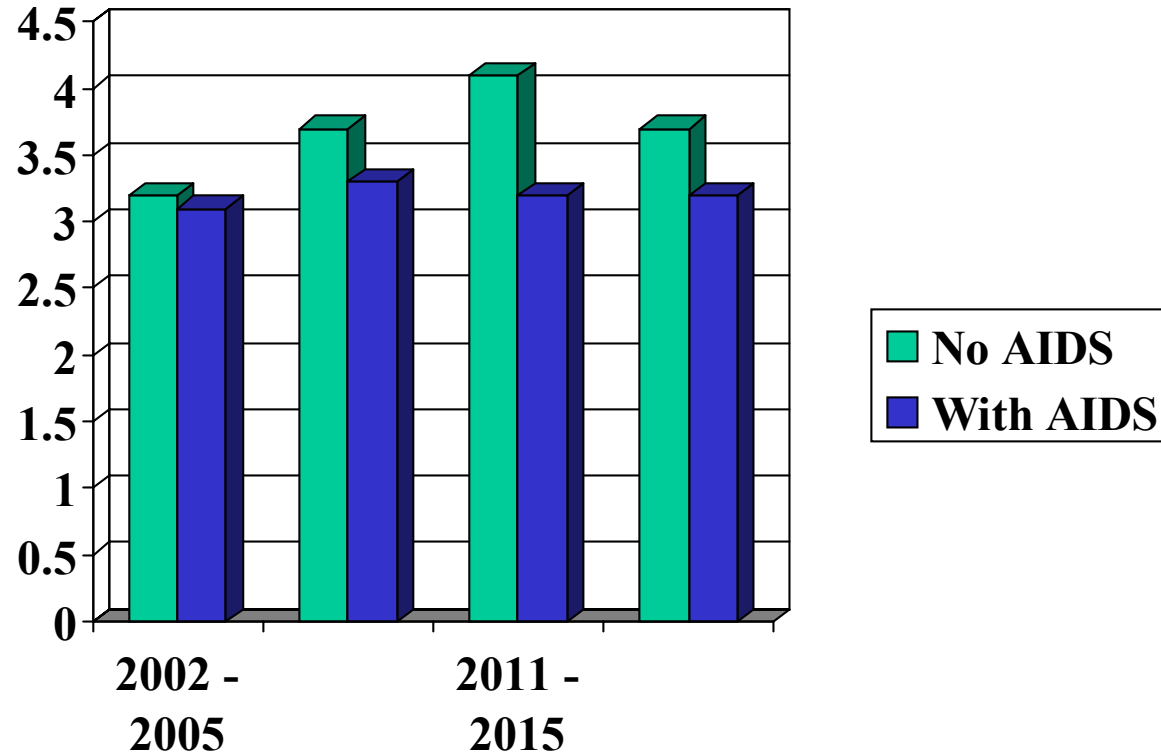
# Total Grade 1 Enrolment for KwaZulu-Natal 1998 - 2001



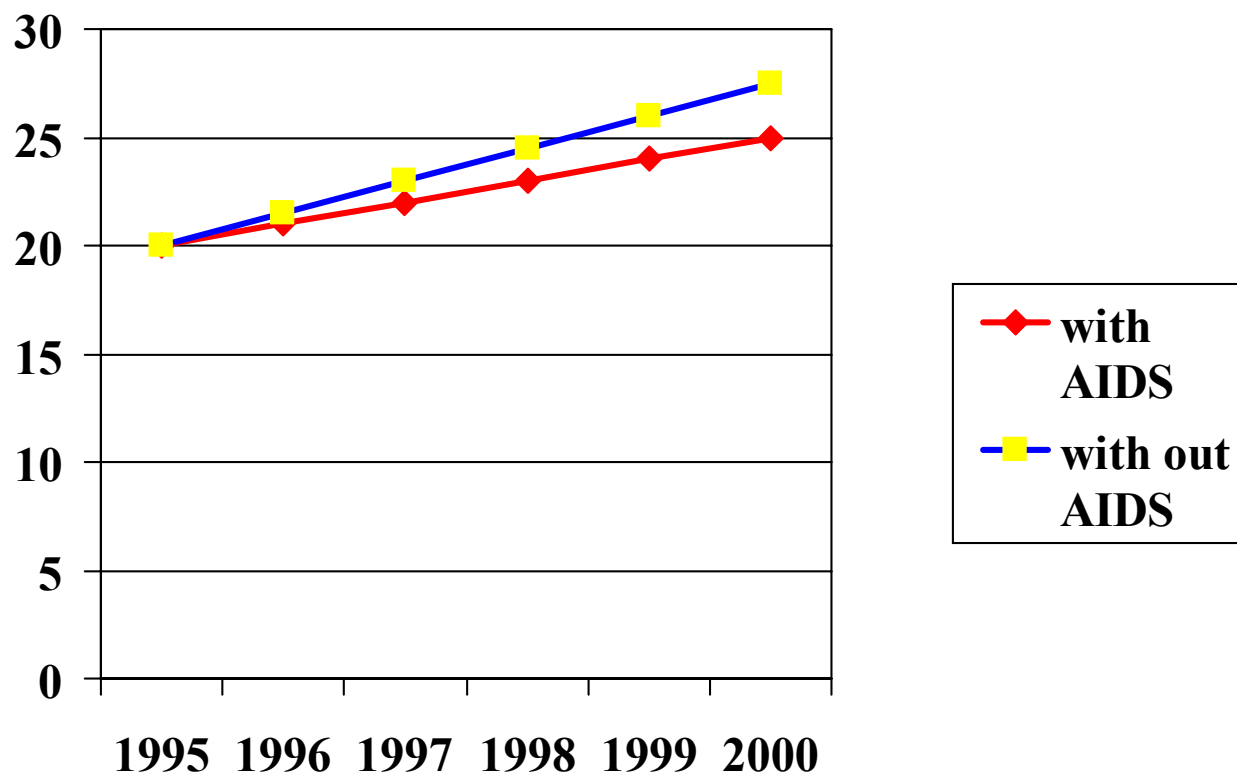
# Increase in enrolment required in 2002 to return to 1998 levels of Grade 1 enrolment



# Forecast GDP Growth 2002- 15



# Modelled Macro-economic Impact



# Conclusions re Households

- Households will try to adapt.
- New forms of household.
- Coping & distress can both be found.

Assets will be sold.

- Households → poorer
- Households → disappear

## Zambia

5 year retrospective study of AIDS-affected families  
(232 urban +101 rural)

Monthly disposable income fell by >80%

## Rakai, Uganda

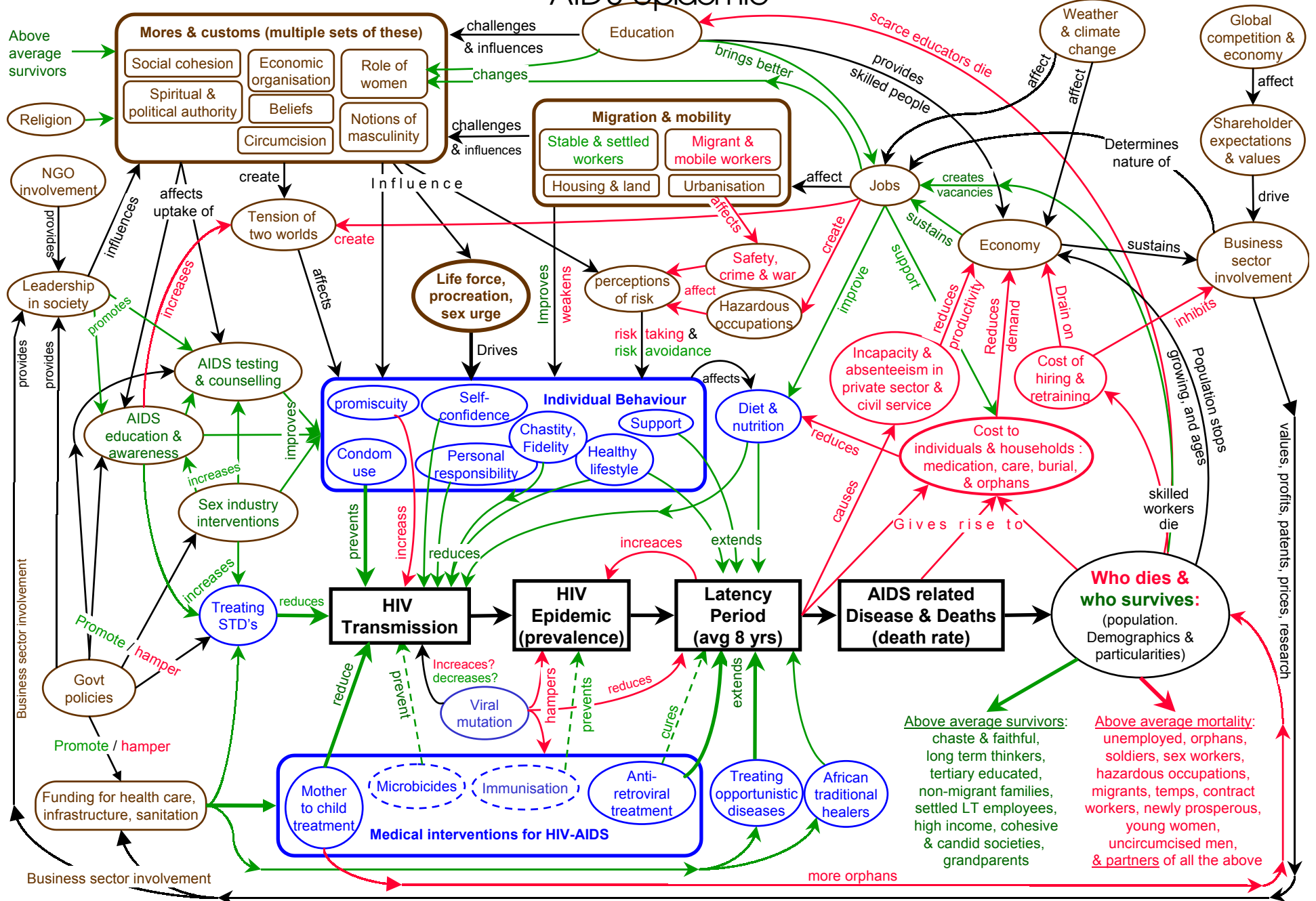
*Bicycles & radios in houses with adult AIDS death*

	<i>Bike</i>	<i>Radio</i>
<i>First visit</i>	39	40
<i>Last visit</i>	35	36

# Problems with Household Studies

- Most deal with Africa;
- They concentrate on rural *households*.
- Survey methods fail to capture the most seriously affected households, those that have disappeared
- Quantitative survey based studies have a ring of 'truth', they do not tell of underlying misery.
- Survey methods don't capture the dynamics of household and intra-household allocation and relations
- Researchers see AIDS as a problem – do people?

# Autonomy of HIV in Complex Societies - A systems model of the S'n Africa AIDS epidemic



## **African Priorities (*Problems mentioned by at least 10%*)**

### **Botswana**

Job Creation (58%) **AIDS (24%)** Education (20%) Poverty (17%) **Health (15%)**

### **Lesotho**

Job Creation (63%) Crime / Security (28%) Food (20%)

### **Malawi**

Economy (48%) **Health (29%)** Crime / Security (28%) Food (26%) Transport (16%)

### **Namibia**

Job Creation (54%) Education (46%) General Serv. (21%) **Health (18%) AIDS (14%)**

### **South Africa**

Job Creation (76%) Crime / Security (60%) Housing (25%) Education (13%) **AIDS (13%)**

### **Zambia**

**Health (41%)** Job Creation (32%) Education (31%) Agriculture (26%) Economy (20%)

### **Zimbabwe**

Economy (74%) Job Creation (37%) **Health (18%)**

# An Action Agenda

There are no:

- Simple solutions
- Short term solutions
- Technical/medical solutions
- Imposed solutions
- Money is not the answer
- Drugs are only part of the answer
- **A multisectoral response**